



**Nordstrom**

**Client**  
Buch  
Construction

## Unique, challenging lighting system installed in new retail space

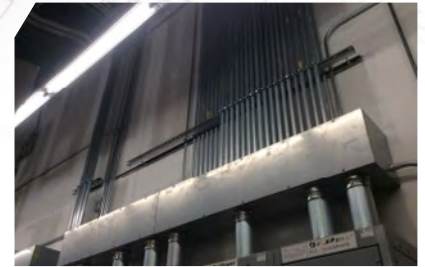
When construction began on the Woodmore Town Center in Glen Arden, MD, shoppers in Prince George's County looked forward to their first local Nordstrom Rack store opening.

Power Solutions was selected as the subcontractor to install all electrical systems in its 25,000 square-foot building, which was being built out to the precise specifications one would expect from a company with a reputation for excellence in all aspects of its operations.

Power Solutions was tasked with installing all electrical controls and fixtures, conduit and wiring for the mechanical systems and security system, and the fire alarm. The store also includes a UPS to maintain its data and security systems in the event of an electrical outage.

Nordstrom supplied its own electrical equipment, including its bus-strut lighting system. This type of novel lighting is suspended on an aircraft cable, similar to track lighting but heavier duty and more complex. It must be installed very precisely.

The Power Solutions team rose to the challenge of installing a new type of lighting system to a specification package more like that for a medical laboratory than a retail store. So much so that Power Solutions has been invited to provide the same services to three more new Nordstrom Rack stores.



NORDSTROM  
**rack**

### By the Numbers

**25K** SQ. FEET

**First-time** INSTALLATION OF BUS-STRUT LIGHTING SYSTEM